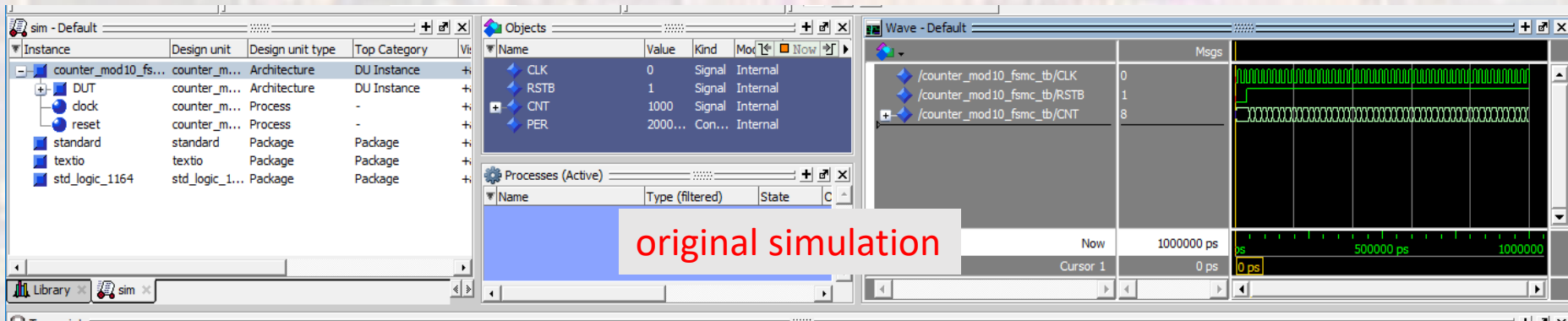
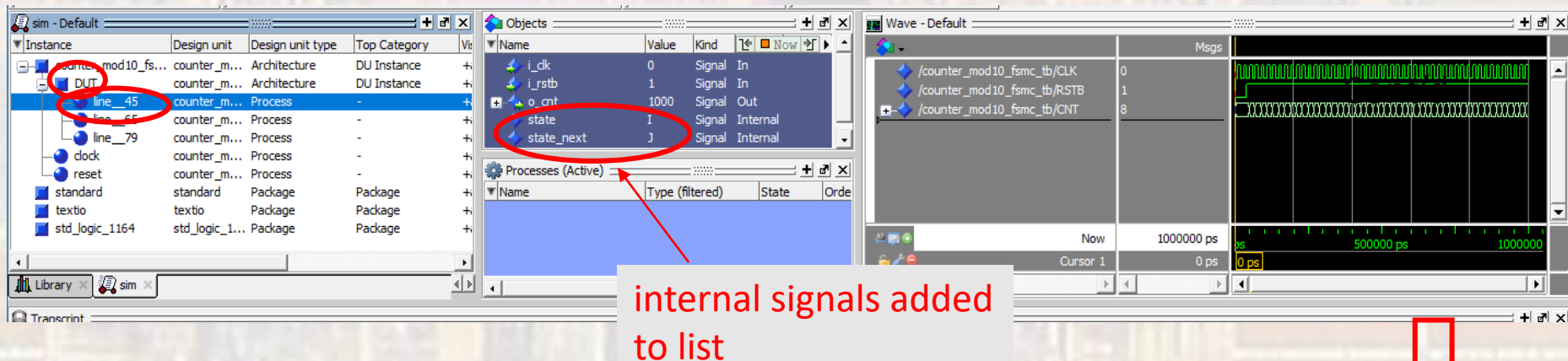


# ModelSim Tips – adding states to sim

- Adding internal signals (States) to the simulation

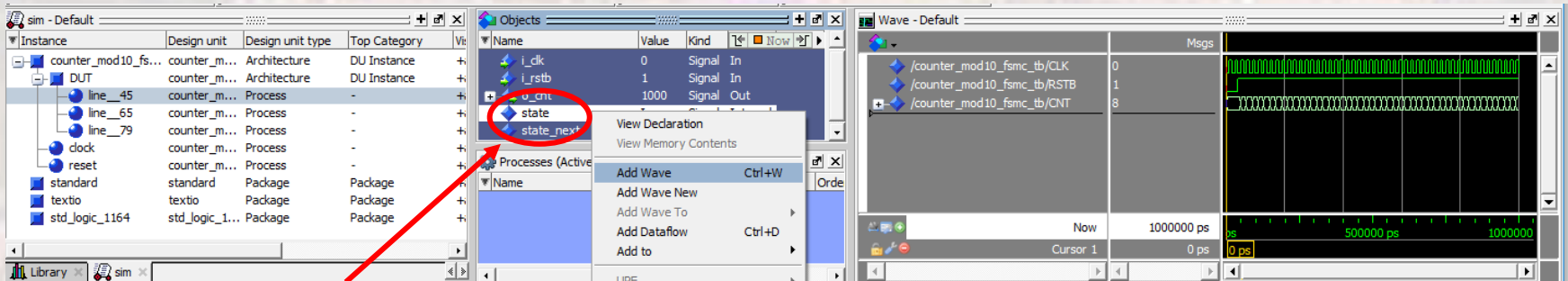


expand the DUT, select any line

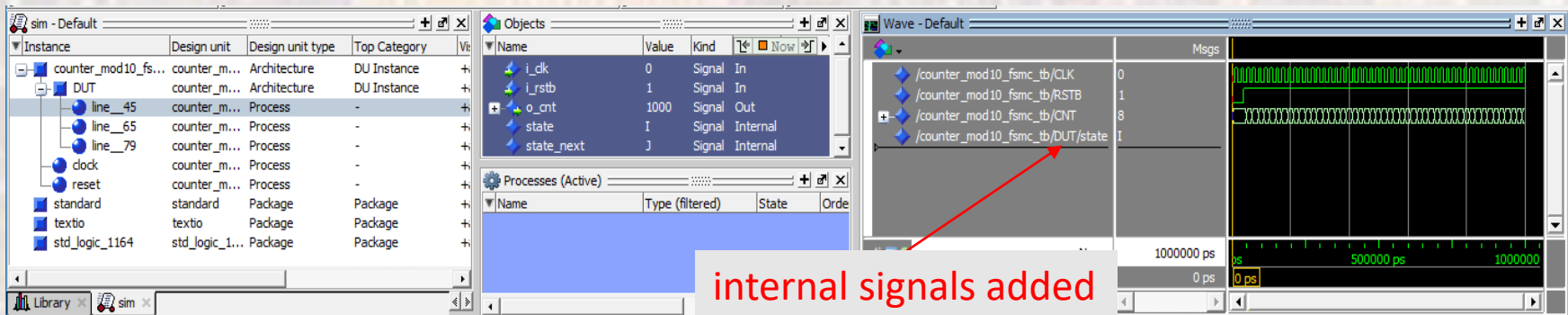


# ModelSim Tips – adding states to sim

- Adding internal signals (states) to the simulation



right click on the signal you want to add and select **Add Wave**



internal signals added to wave list



# ModelSim Tips – adding states to sim

- Adding internal signals (states) to the simulation

simulate -> restart

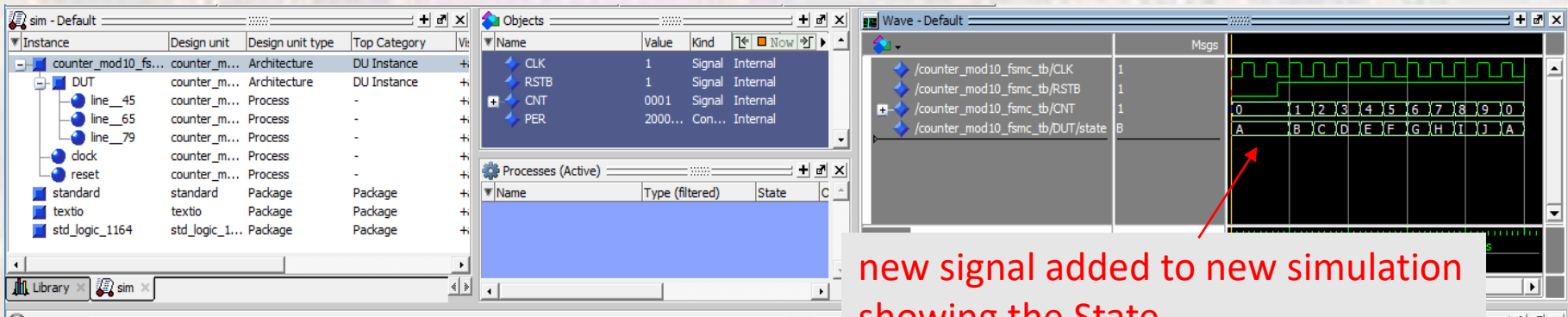
click OK

Simulate -> Runtime Options... -> Default Run

set the default run to the desired simulation time, e.g. 3000 ns

Simulate -> Run -> Run 100

hitting Run 100 will run the simulation again with the new signal added



The screenshot displays the ModelSim interface. The Objects window shows a list of internal signals: CLK (Value: 1, Kind: Signal, Internal), RSTB (Value: 1, Kind: Signal, Internal), CNT (Value: 0001, Kind: Signal, Internal), and PER (Value: 2000..., Kind: Con..., Internal). The Wave window shows a timing diagram with a new signal added to the simulation, showing the State. A red arrow points to the new signal in the Wave window.

new signal added to new simulation showing the State