

MSP 432

Hardware Setup

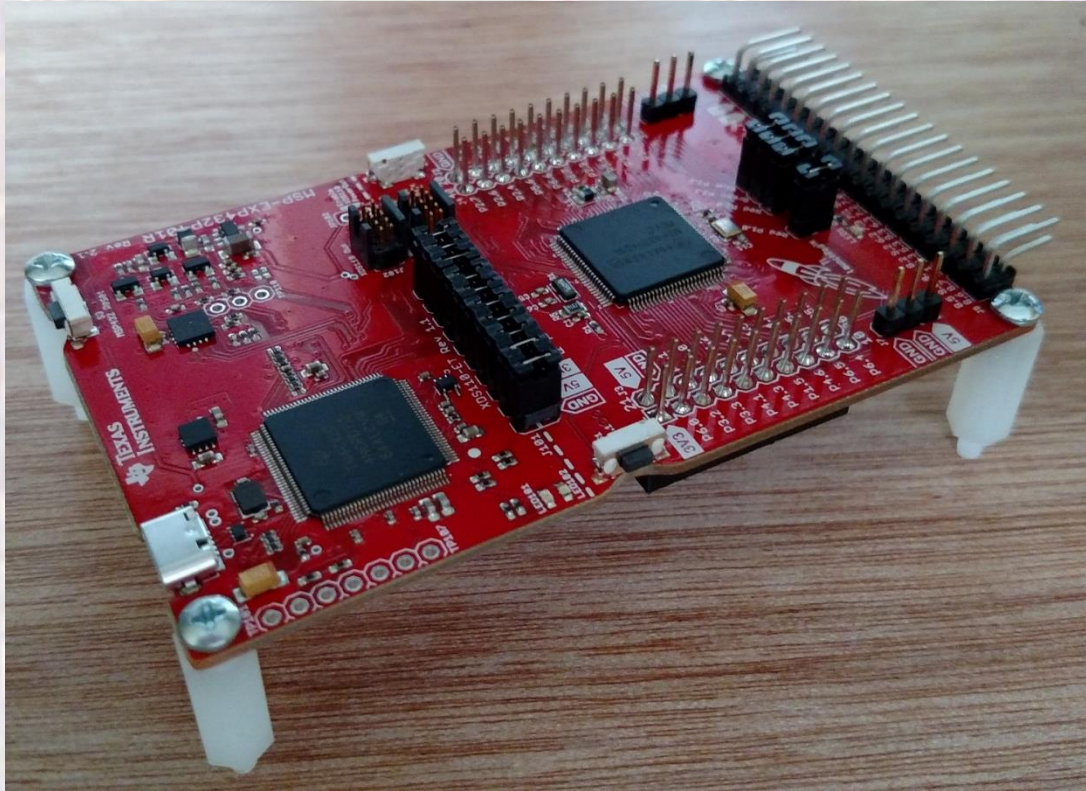
Hardware Setup

- Kit Contents



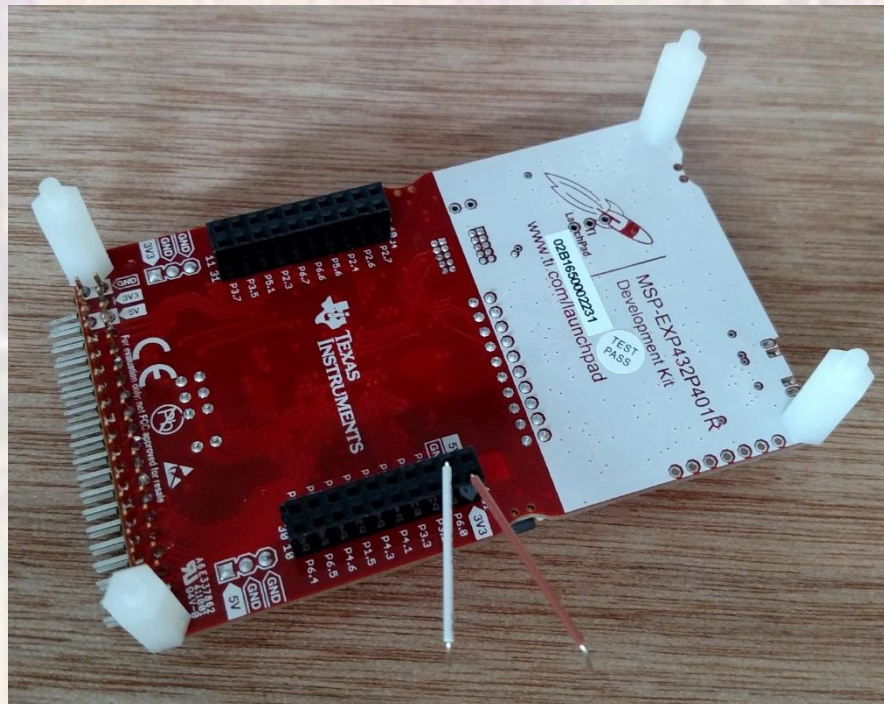
Hardware Setup

- Assemble MSP432 offset legs
 - MS432 – from Box
 - Legs and screws from Bag B



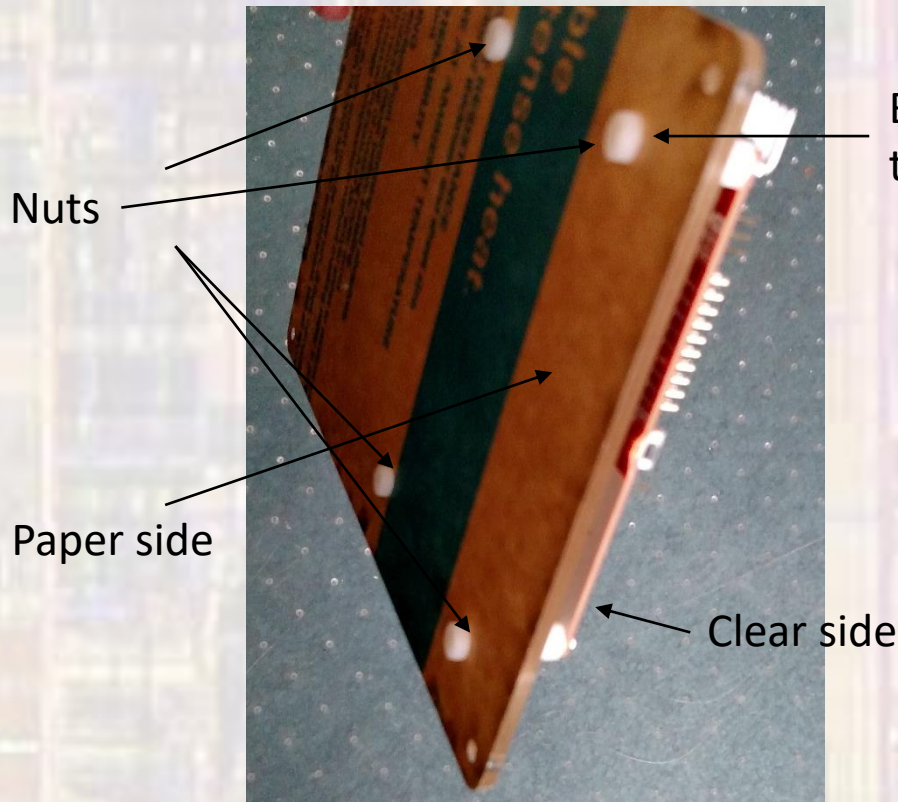
Hardware Setup

- Attach 3.3V and Gnd jumpers
 - On the bottom of the MSP board
 - connect:
 - 1 jumper connected to gnd (make sure it is long enough)
 - 1 jumper connected to 3.3V (make sure it is long enough)

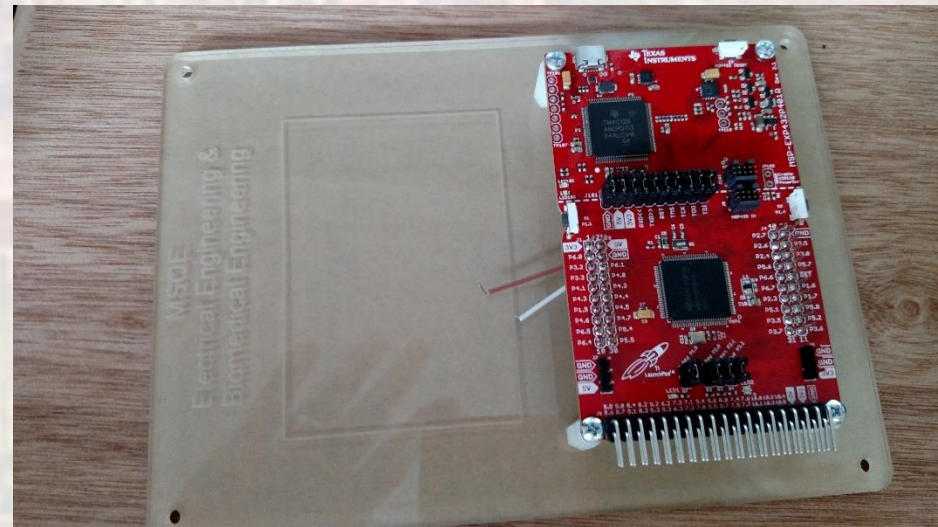


Hardware Setup

- Attach MSP432 to hardboard
 - Using nuts from bag B
 - Attach the MSP432 extension legs to the hardboard



Be careful not to strip the plastic legs



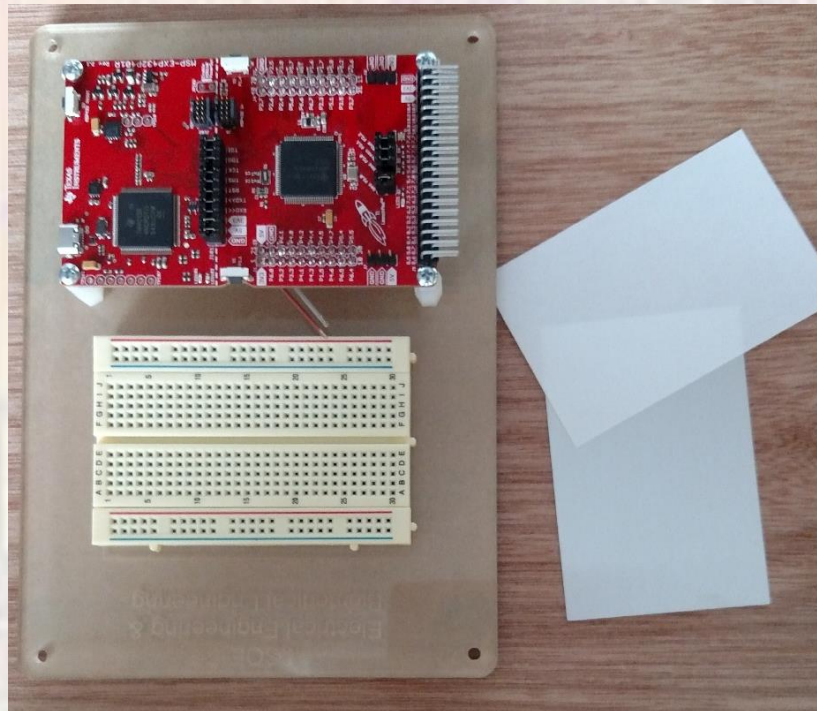
Hardware Setup

- Put the 4 rubber bumpers on the bottom of the board



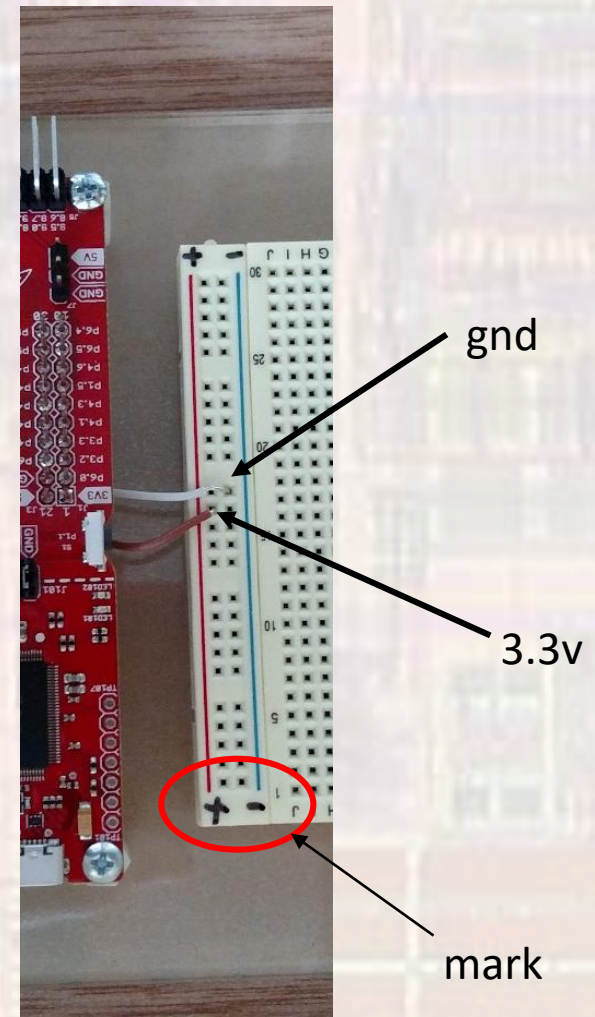
Hardware Setup

- Attach Breadboard to hardboard
 - Remove the protective sheet from the back of the breadboard
 - Align the breadboard with the indicator lines and attach with the 2 sided tape



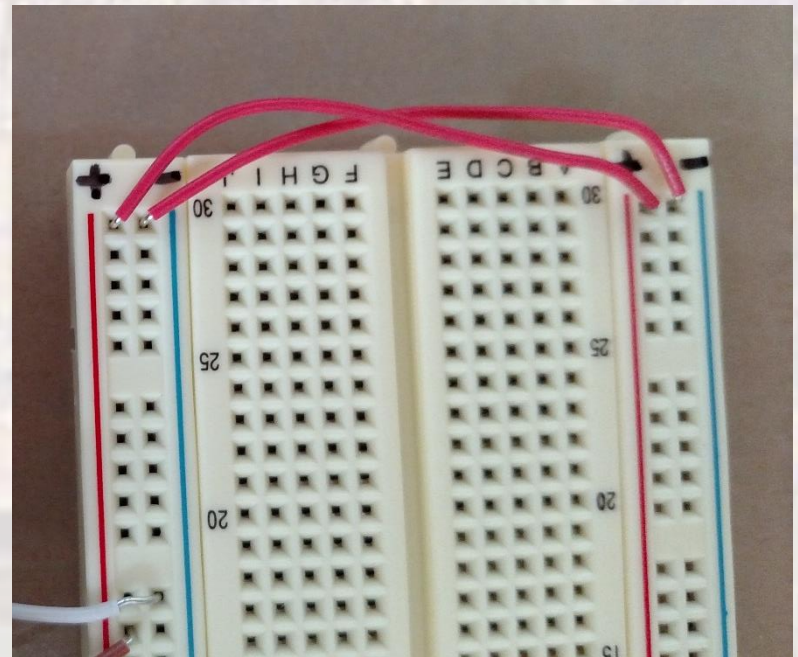
Hardware Setup

- Connect 3.3v and Gnd
 - Attach the 3.3v jumper (brown) to the red side of the breadboard
 - Attach the gnd jumper (white) to the blue side of the breadboard
 - Make sure the 2 wires do not touch
 - Use a permanent marker to indicate the red side is + and the blue side is -



Hardware Setup

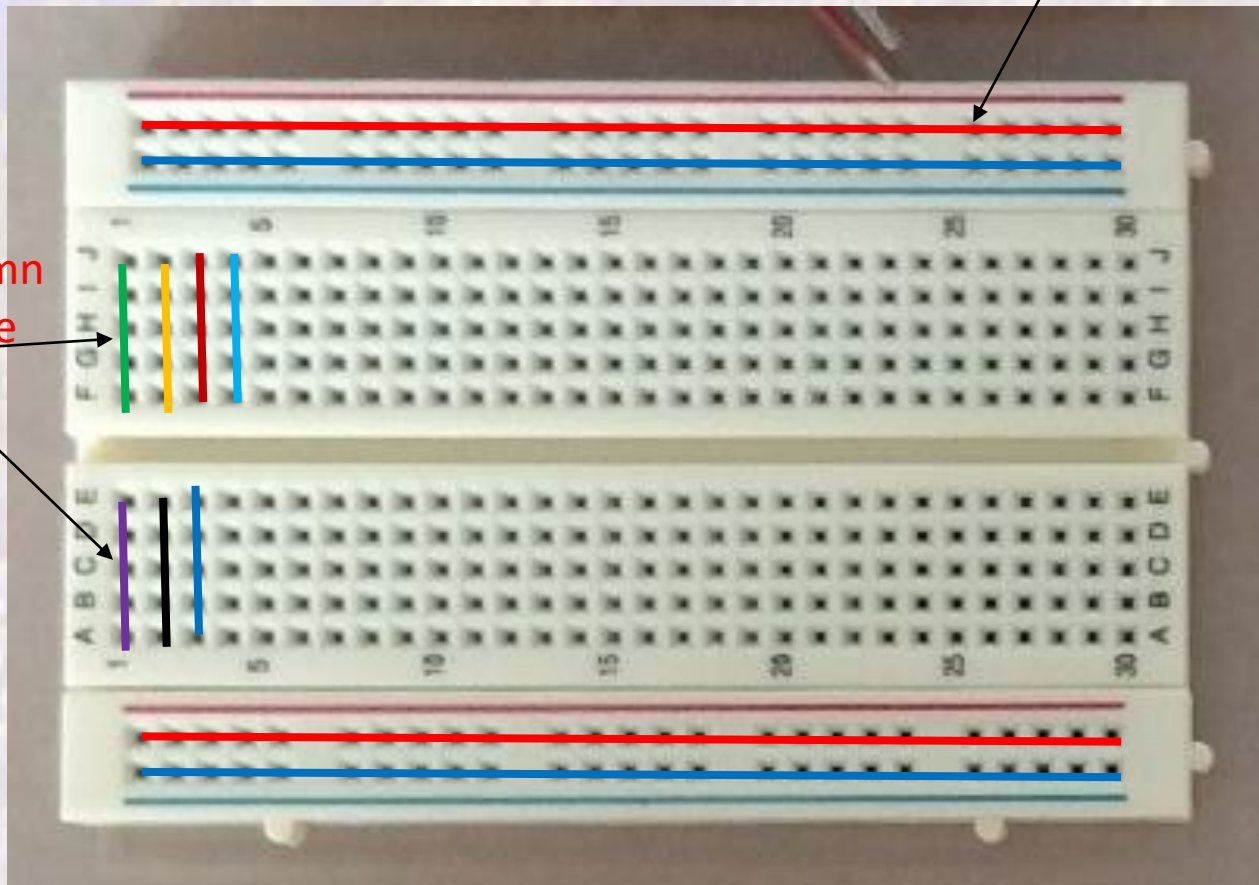
- Connect 3.3v and Gnd
 - Connect the two red rails together
 - Connect the two blue rails together



Hardware Setup

- Breadboard Connections

Each long row is a shorted wire



Each short column is a shorted wire

Hardware Setup

- Test
 - Connect the u-usb connector to your computer and to the MSP board
 - The green power light should be on
 - The LED2 light should be flashing at a 1Hz rate

