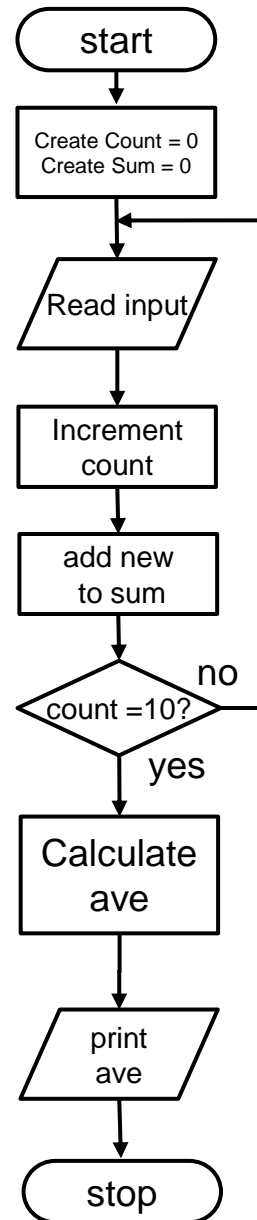


EE 1910

Dr. Johnson

Homework 2

1 – Create a Flow Diagram for a program that reads in 10 numbers, computes the average, and prints the result. 40pts



2 – Create a Flow Diagram for a program that continuously reads in a new number, compares it to the current saved value, then saves the larger of the two. After every 10<sup>th</sup> new number, it prints out the new saved value. 60pts

