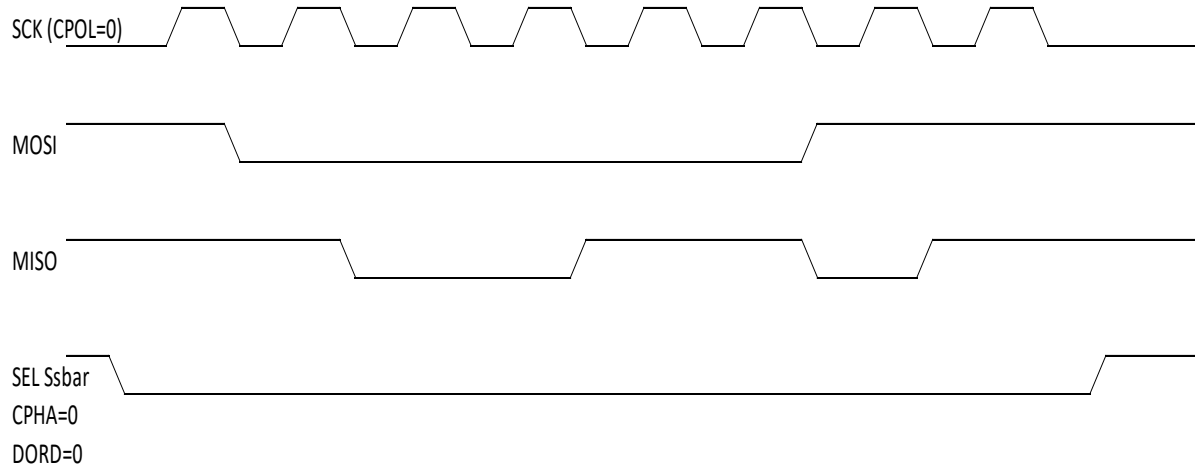


EE 2920

Dr. Johnson

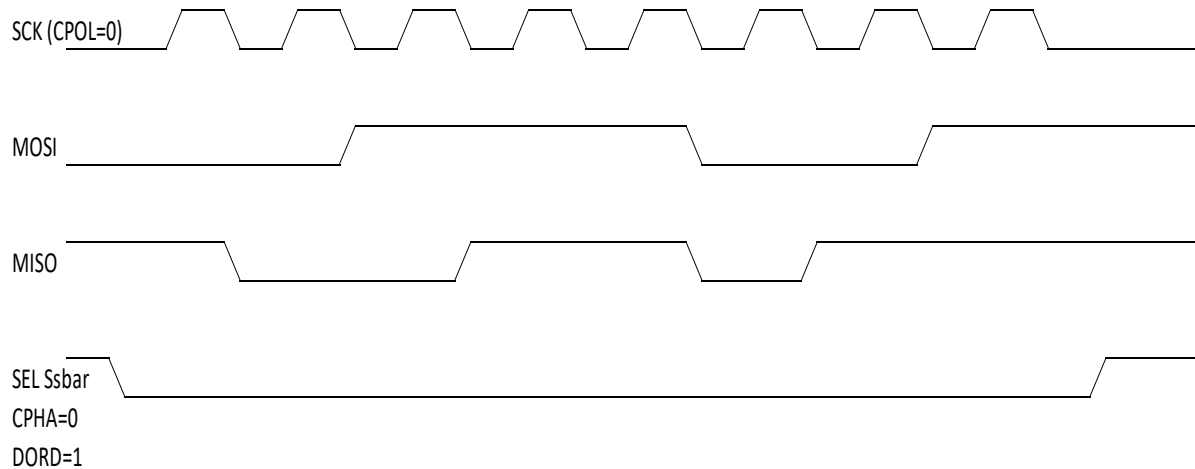
Homework 12

1) What value is contained in the master and slave registers after a successful SPI transmission – 2 problems A,B 20pts



Master: HEX

Slave:



Master: HEX

Slave:

2) Write a function to configure the SPI to operate with the following settings
assuming the clock is 3 MHz: 20pts

- 10.923KHz baud rate
- enable SPI to master mode
- SCK pin idle high with data shifted on the rising edge of SCK
- transfer data least significant bit first and no interrupts

~ 6 lines of code

3) Use your SPI setup to transfer a “count” value out of the SPI – verify with the analog discovery 60pts

~ 14 lines of additional code

Analog discovery example output

