

EE 2920

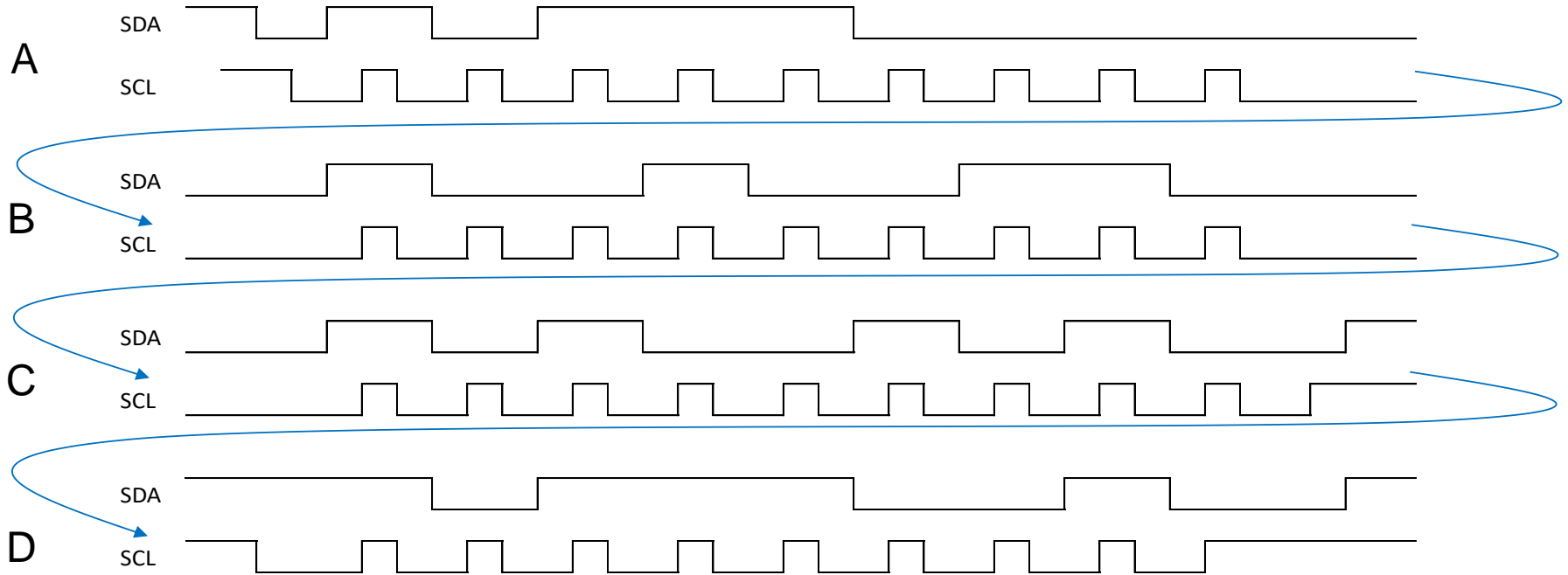
Dr. Johnson

Homework 13

1) Assuming a TWI connection and a continuous signal:

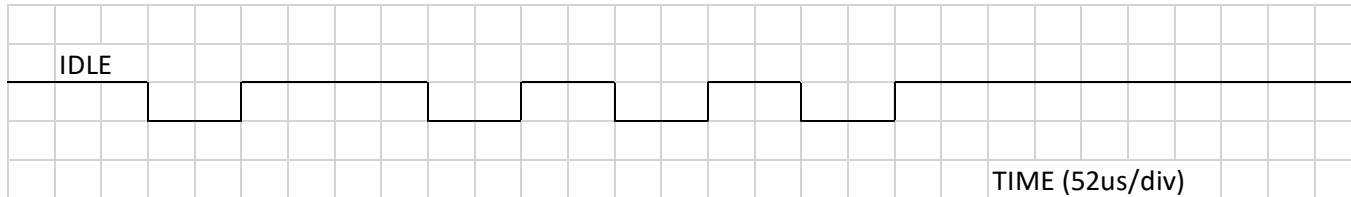
50pts

Fill in the table below

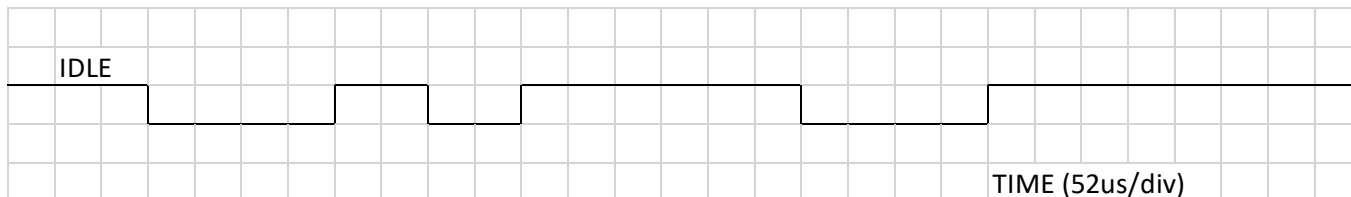


	Address or Data	Value (Hex)	R/W	Valid Y/N
A	<input type="text"/>	<input type="text"/>	<input type="text"/>	<input type="text"/>
B	<input type="text"/>	<input type="text"/>	<input type="text"/>	<input type="text"/>
C	<input type="text"/>	<input type="text"/>	<input type="text"/>	<input type="text"/>
D	<input type="text"/>	<input type="text"/>	<input type="text"/>	<input type="text"/>

2) Assuming a UART running at 9600 Baud in asynchronous mode, 8 data bits, LSB First, 1 stop bit, even parity 50pts



Data Value detected (hex) =



Data Value detected (hex) =