

EE 3921

Dr. Johnson

Homework 4

1) Code and simulate your HVAC system from HW3. Use a fixed Desired temperature of 25°C. Ramp the Actual temperature from 10°C to 40°C.

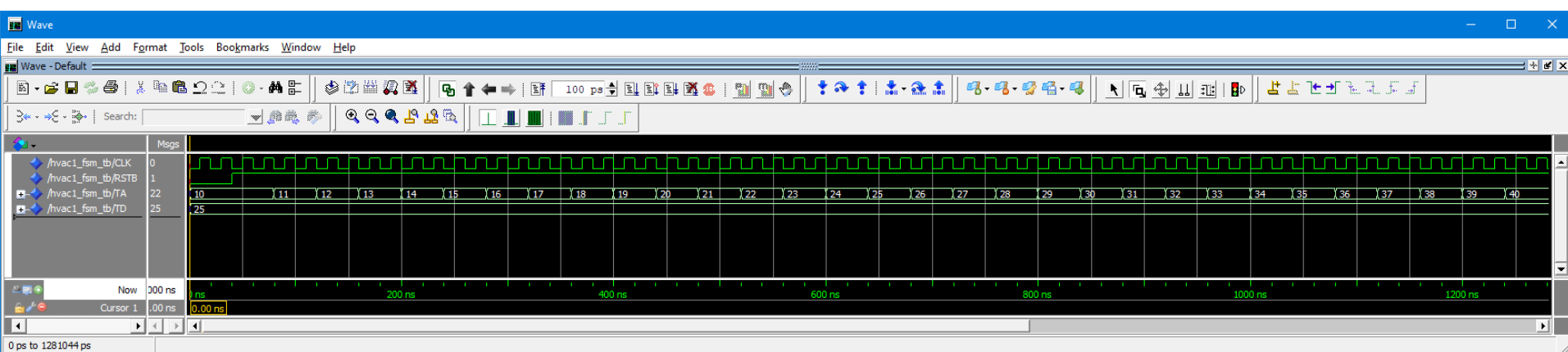
Provide your Code 40 pts

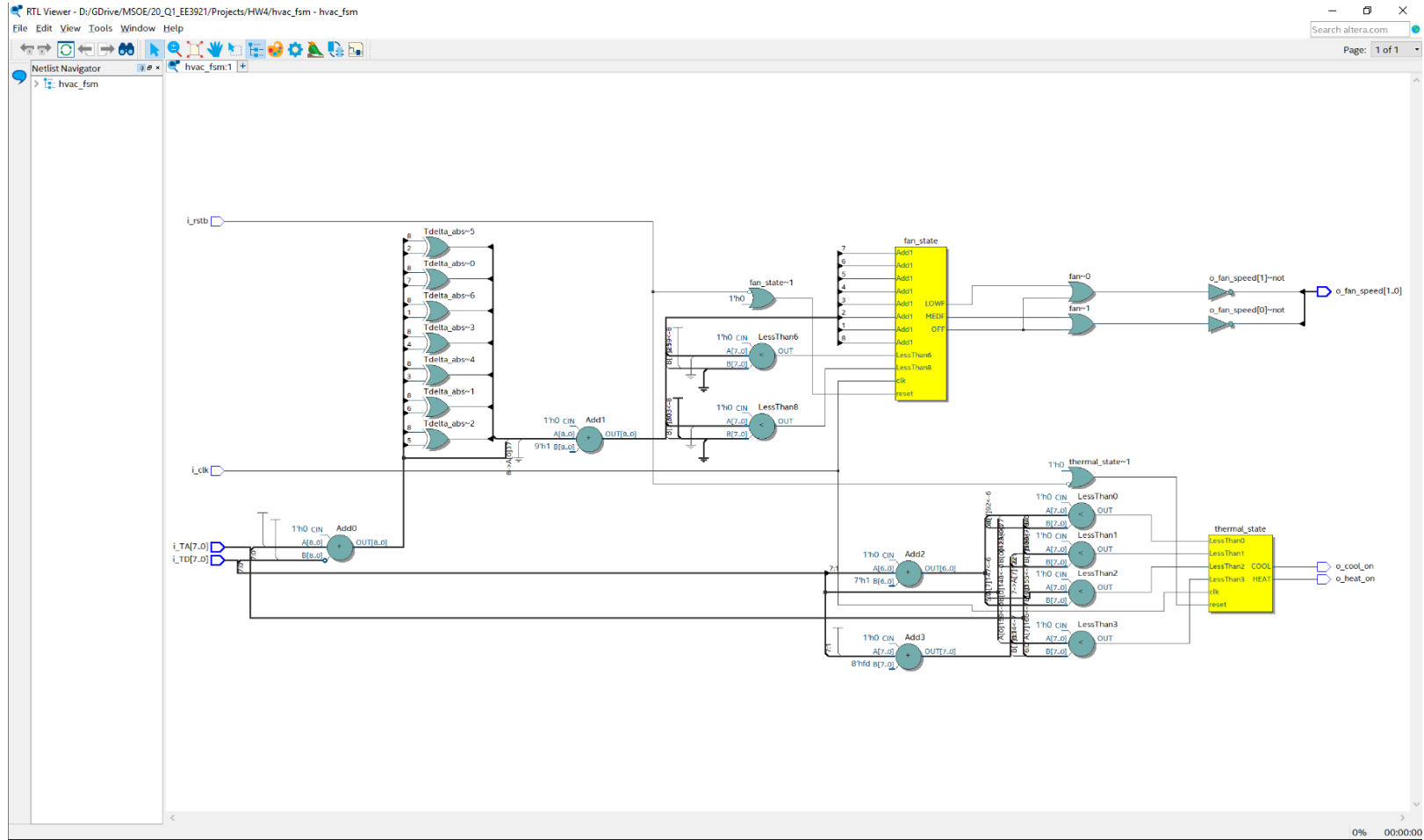
Provide your RTL schematic 10 pts

Provide your Quartus state machine 10 pts

Provide your annotated sim results 40 pts

(add the state signals to your simulation)





State Machine Viewer - D:/GDrive/MSOE/20_Q1_EE3921/Projects/H...

File Edit View Tools Window Help Search altera.com

State Machine: |hvac_fsm|thermal_state

thermal_state

State Table

	Source State	Destination State	Condition
1	COOL	IDLE	(LessThan2)
2	COOL	COOL	(!(LessThan2))
3	HEAT	IDLE	(LessThan3)
4	HEAT	HEAT	(!(LessThan3))

Transitions / Encoding /

100% 00:00:03

State Machine Viewer - D:/GDrive/MSOE/20_Q1_EE3921/Projects/H...

File Edit View Tools Window Help Search altera.com

State Machine: |hvac_fsm|fan_state

fan_state

State Table

	Source State	Destination State	Condition
1	HIGHF	HIGHF	(!Add1),(!Add1),(!Add1),(!Add1),(!Add1),(!Add1) + (!A
2	HIGHF	MEDF	(!Add1),(!Add1),(!Add1),(!Add1),(!Add1),(!Add1) + (!A
3	LOWF	LOWF	(!Add1),(!Add1),(!Add1),(!Add1),(!Add1),(!Add1),(!Les
4	LOWF	MEDF	(!Add1),(!Add1),(!Add1),(!Add1),(!Add1),(!Add1),(!Les

Transitions / Encoding /

0% 00:00:00

States added
| Tdelta | added

