

EE 4980

Test 2

110 pts

Open Everything
No Collaboration

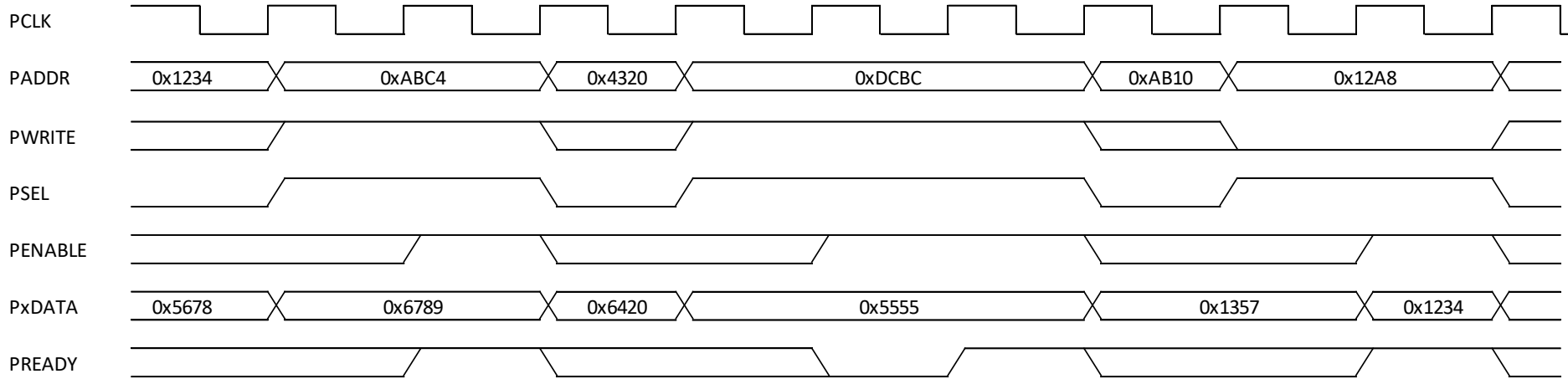
Process:

The test will be posted at 11:00 AM on the test day on the HW web page

Solutions are due 60 minutes later in OneNote inside the Tests tab

I will be available via MS-Teams or email if you have questions or internet issues

1) Below is a trace from an APB bus, fill in the table below (leave unknowns empty) after completion of this trace. 32 bit address and data 10pts



Address	Data	
	Master (via the bridge)	Slave (peripheral)
0x1234		
0x12A8		
0xAB10		
0xABC4		
0xABD0		
0xDCBC		

2a) PCIe is a _____ interconnect system

10pts

- A) Half Duplex – multi-node network
- B) Point to point network
- C) Star network
- D) Bus based network

2b) PCIe uses 8/10bit and 128/130 bit encoding to achieve what two outcomes:

2c) Assume a PCIe Link operating at 8GT/s in a 4x configuration with a total of 400 bits in the frame how long would a single read request take?

3) Using the (2,7) RLL decoder from class

10 pts

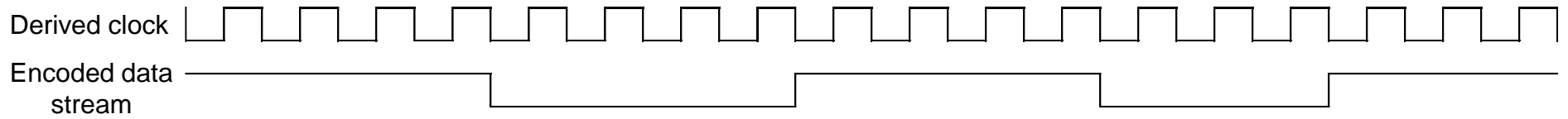
a) Decode the following signal

N N N T N N N N T N N N N N N T N N N N N N T N N N

b) Encode the following signal

001111010000

c) Decode the following waveform (assume positive edge capture by the clock)



4) Consider a 10 in x 10 in resistive touch screen, given the following measurements, locate the touch point:

10pts

Assume: resistivity = 5K ohm / inch

Drive voltage = 5V at top and right

Y measurement = 2.77V

X measurement = 1.43V

Define the origin at the lower left corner

_____ inches from bottom
_____ inches from left

5) Assuming a 5 stage pipeline with 1us delay per stage

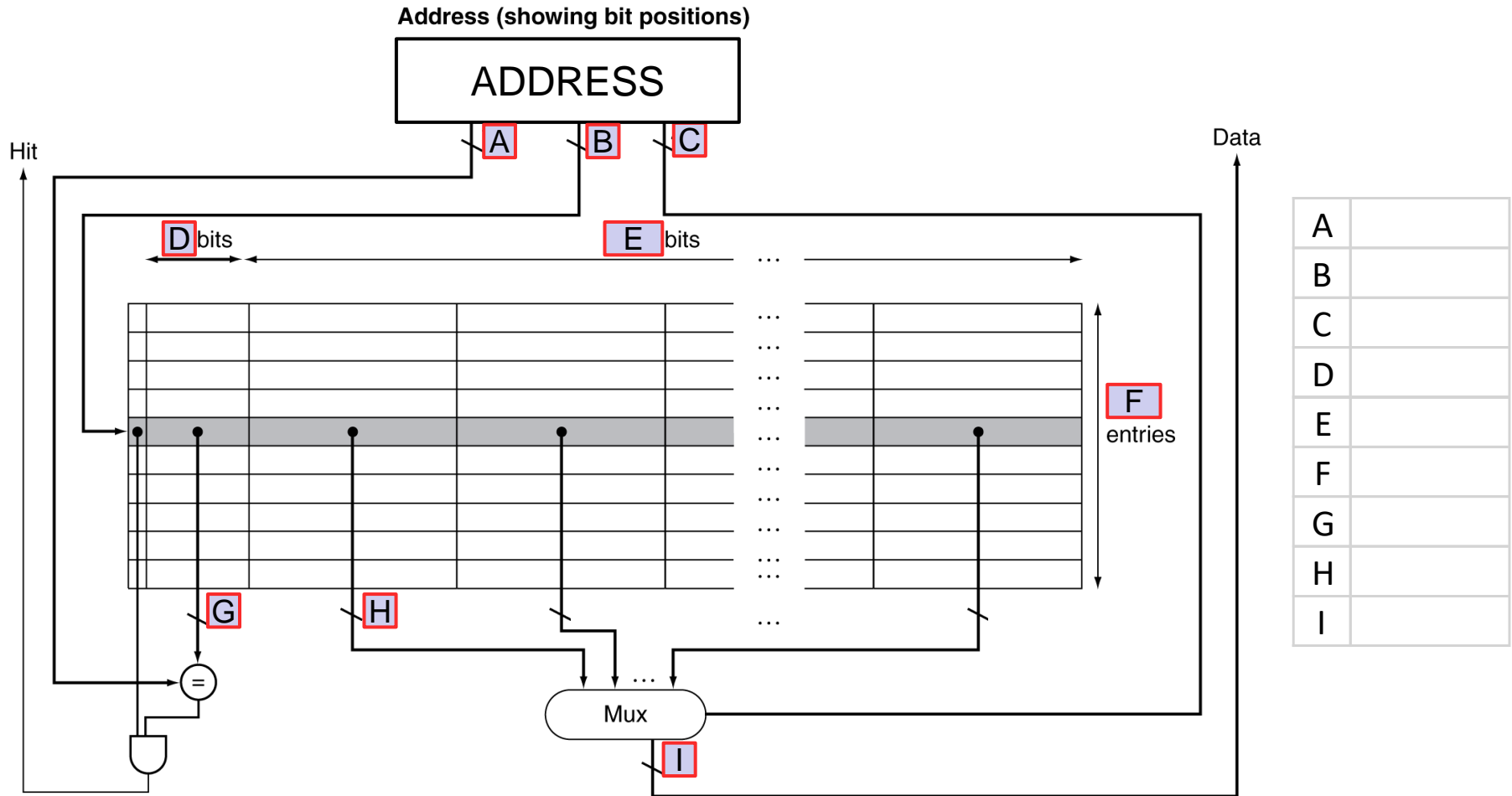
10pts

A) What is the execution time for each instruction

B) Assuming the processor has been running for a long time – how many instructions complete in a 10us window

C) How many of these pipelines would need to be configured in a superscalar configuration to achieve an IPC of 5

6) Given a 4kB direct mapped cache with 16 bit words, 8 word blocks, and 32 bit addressing – fill in the table referencing each letter. 10 pts



A	
B	
C	
D	
E	
F	
G	
H	
I	

7a) Explain why 4 satellites may not be sufficient to get a GPS fix when accounting for the receiver clock error. 5 pts

7b) Identify at least 2 approaches to solve this problem 5 pts

8a) Explain why the range (R) in the RADAR equation is raised to the 4th power 5 pts

8b) Explain why the target cross-section may not be directly related to the size of the target 5 pts

9) In our wireless charging discussion, we said that the device being charged could communicate back to the charging station. Briefly explain the electrical mechanism that makes this possible 5 pts

10) In Bluetooth, what type of link is used for voice communication and why? 5 pts

11) Search and think

10 pts

There are 3 types of RFID tags, passive, active, and battery assistive passive. The passive RFID tags have no battery. How are they able to transmit the tag information to a scanner with no battery?

What technology(ies) that we discussed this term directly relate to RFID technology?

12) Think

10 pts

My car has a number of safety/convenience features. Identify the technology(ies) we discussed this term that applies to each feature

- a) Lane assist (warns when I leave my lane)
- b) Active cruise control (keeps space to next car)
- c) Anti-collision
- d) Android Auto (Apple Carplay)
- e) Navigation
- f) 10in Display
- g) keyless entry/start
- h) Backup camera