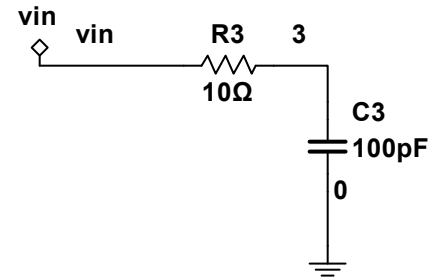
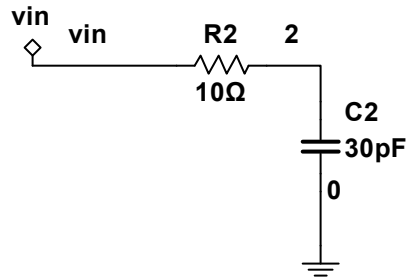
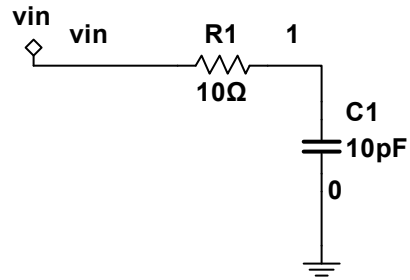
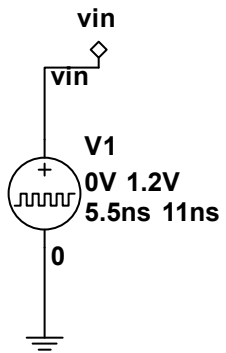
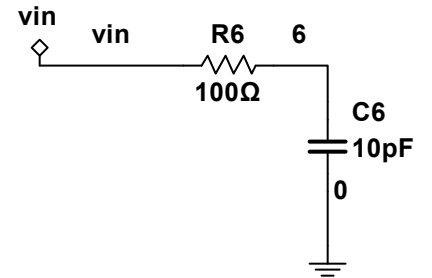
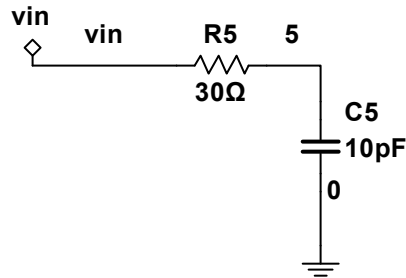
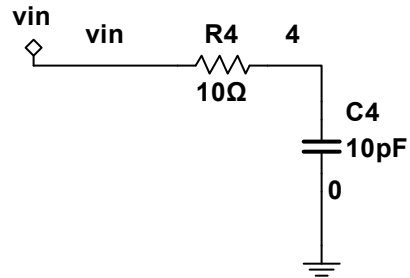


Constant Output Impedance, Varying Load Capacitance



Varying Output Impedance, Constant Load Capacitance



sources/signal voltage sources
 PULSE_VOLTAGE
 0 - 1.2v
 1ns delay
 10ps rise
 10ps fall
 5.5ns pulse
 11ns period

Transient simulation
 End Time: 20E-9 (20ns)



Title: Lab1_P1	
Desc.: Lab 1 - part 1: Basic timing measurements	
Designed by: tj	Revision:
Date: 7/27/2023	Size: A
Sheet 1 of 1	