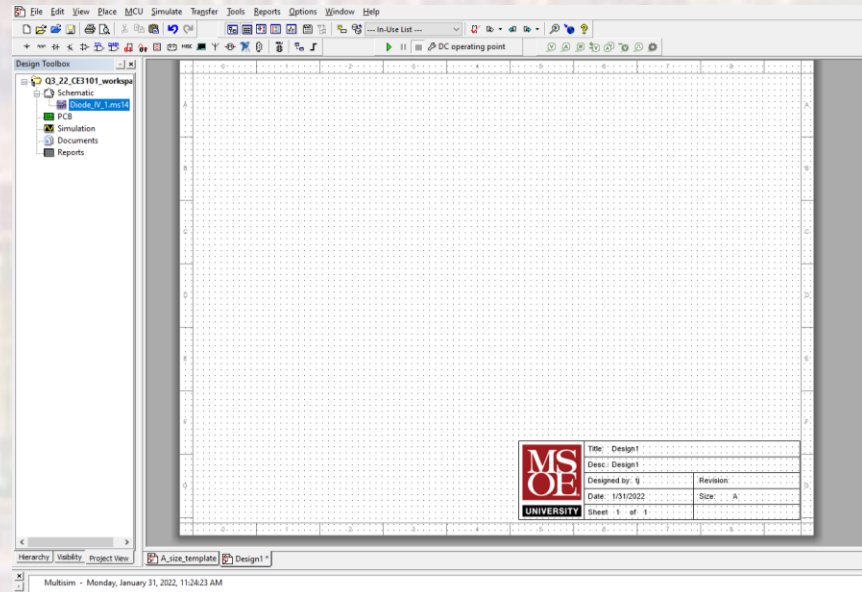
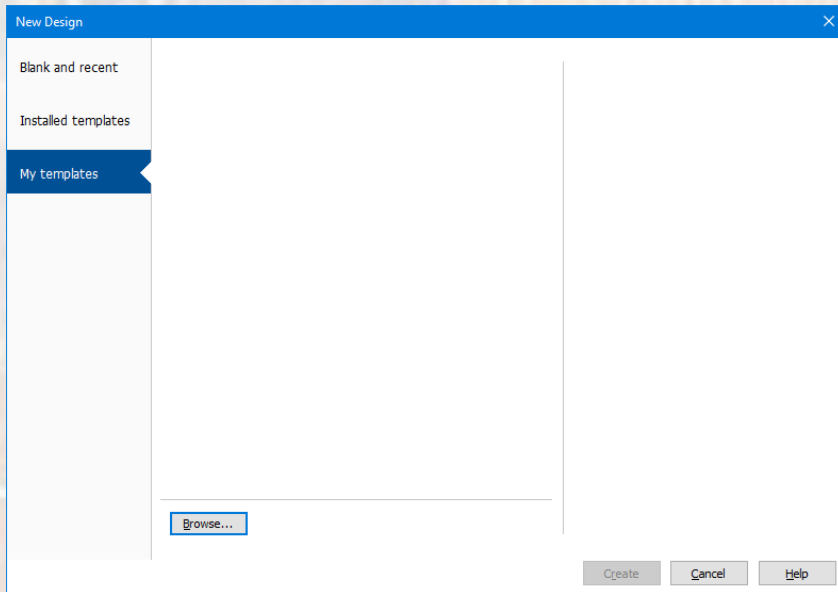


MSOE Library Setup

Last modified 12/21/23

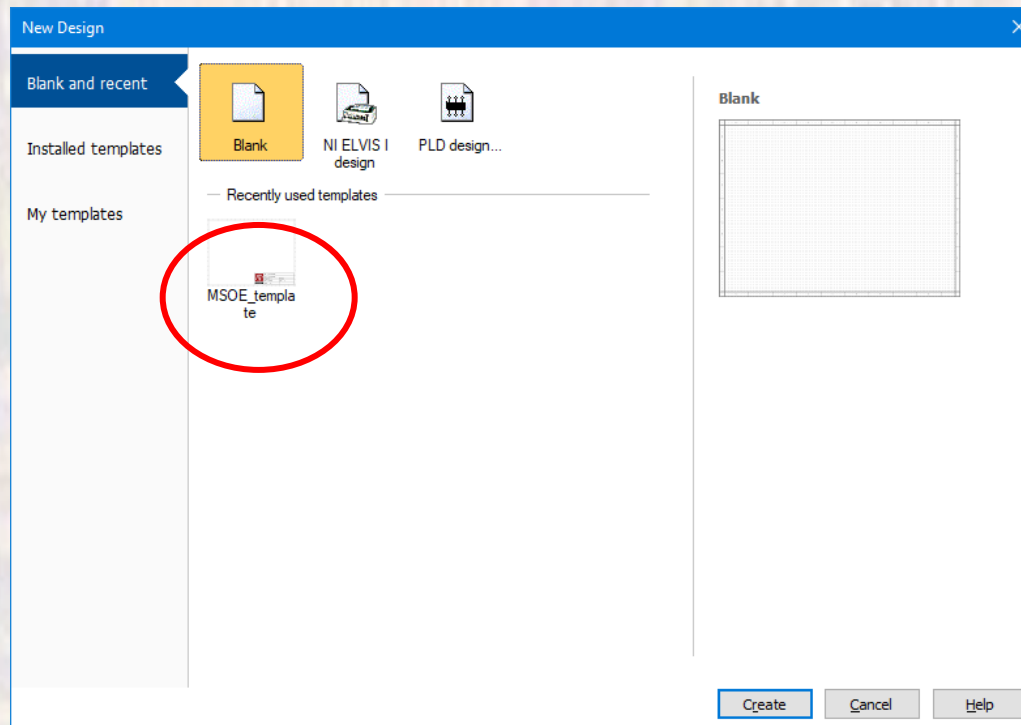
MSOE Library Template

- Install MSOE Template
 - Download the MSOE_Template from the website
 - [rt click](#) and select [Save link as](#) to save into your project workspace
 - In MultiSim: **File** → **New**
 - Select **My templates**
 - Browse to your workspace and select MSOE_template
 - Close the file



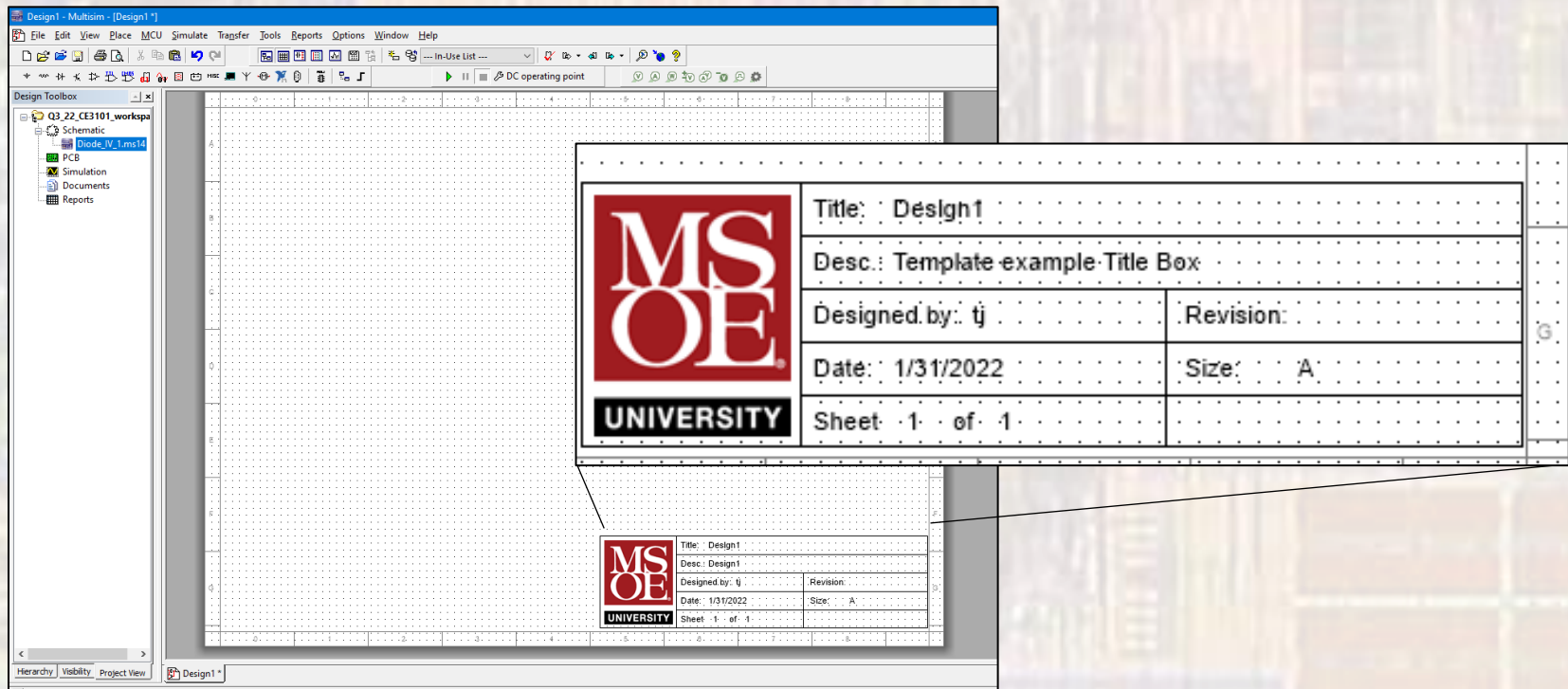
MSOE Library Template

- Use MSOE Template
 - **File** → **New**
 - Select **Blank and Recent**
 - The MSOE template should be available under Recently used templates



MSOE Library Template

- Use MSOE Template – cont'd
 - A new design will be opened
 - The title block fields will auto-fill
 - The Desc block is the **ONLY** item you should change
 - **Double-click** on the **Title Box** and type in an appropriate description



MSOE Library Components

- Add MSOE specific components to the MultiSim database
 1. **Download** the component files from Dr. Johnson's website
Place them in your MultiSim project directory
 2. **Open MultiSim**
 3. **File** → **New** → **Blank and Recent** → **MSOE_Template** → **Create**
 4. **Tools** → **Database** → **Database Manager**
 5. **Select Family Tab** → **Expand User Database** → **select Transistors**
 6. **Select Add Family** → **set Enter Family Name** to **MSOE** → **OK**

MSOE Library Components

- Add MSOE specific components to the MultiSim database
 7. Select the Components tab → select Database Name as User Database → select import
 8. Traverse to where you saved the component files → set the file type in the search box to Component Packed Files
 9. Select one of the model files → Start → Overwrite → OK → Close
 10. Repeat the import for each component
 11. Close the Database Manager
 12. Return to the Family Tab, User Database, Transistors, MSOE and select the letter M in the default prefix dropdown

MSOE Library Components

- Select a new component for placement
 - In the schematic window **select Place** → **Component**
 - Alternately **rt-click** in the window and select **Component**
 - **Set** the **Database** pulldown to **User Database** → **highlight MSOE**
 - The downloaded components should be available for placement

