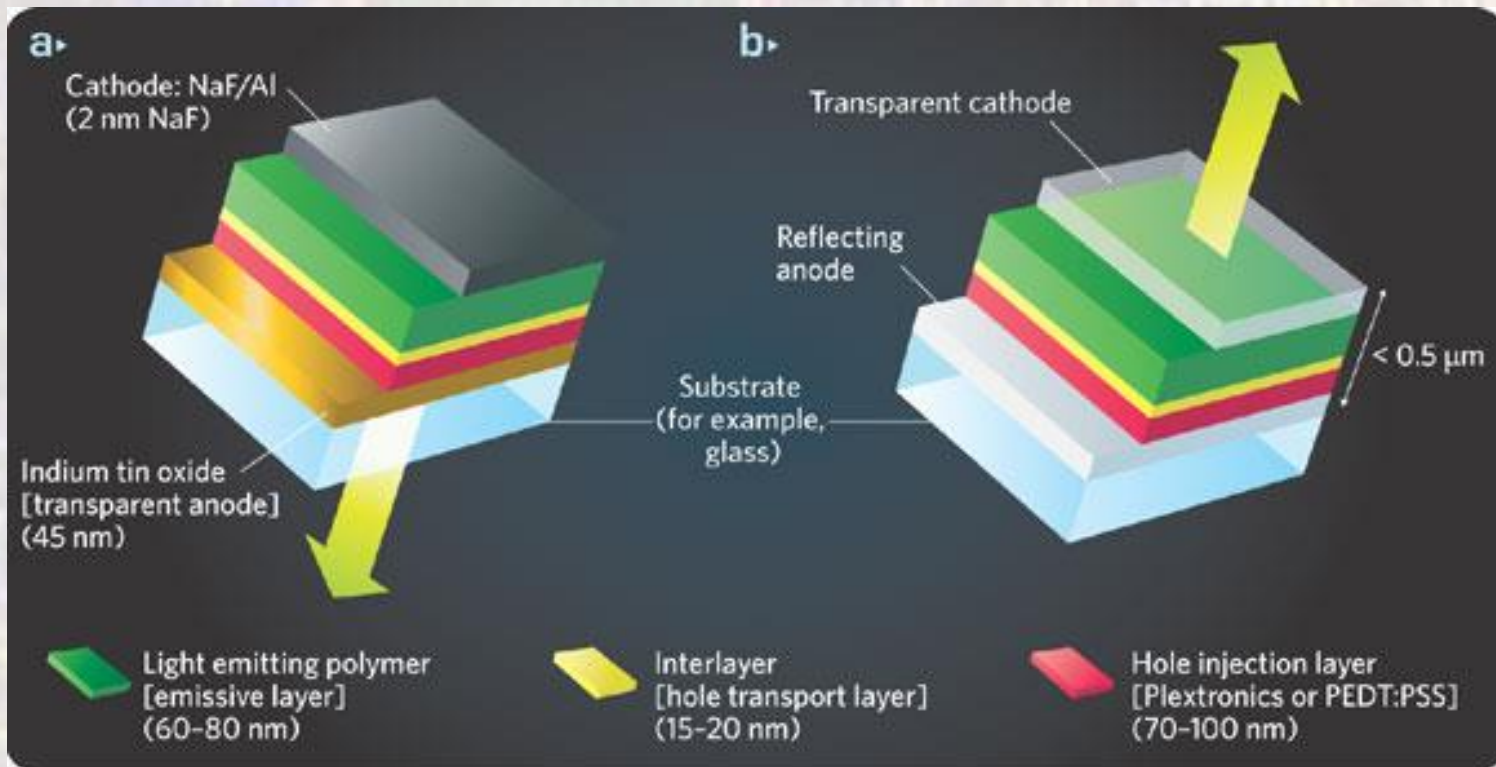


# OLED Displays

Last updated 2/29/24

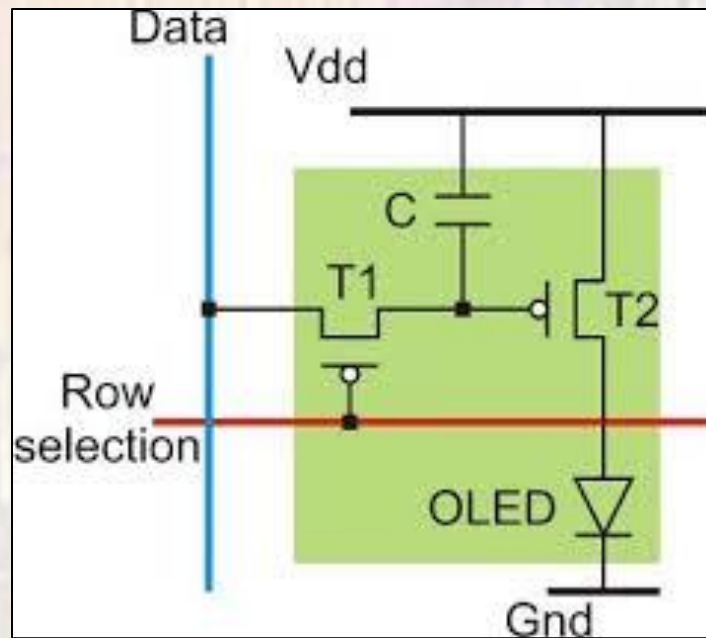
# OLED Displays

- Organic LED
  - LED constructed of organic material
  - Engineered to create R,G, or B
    - Can add color filters for fine tuning



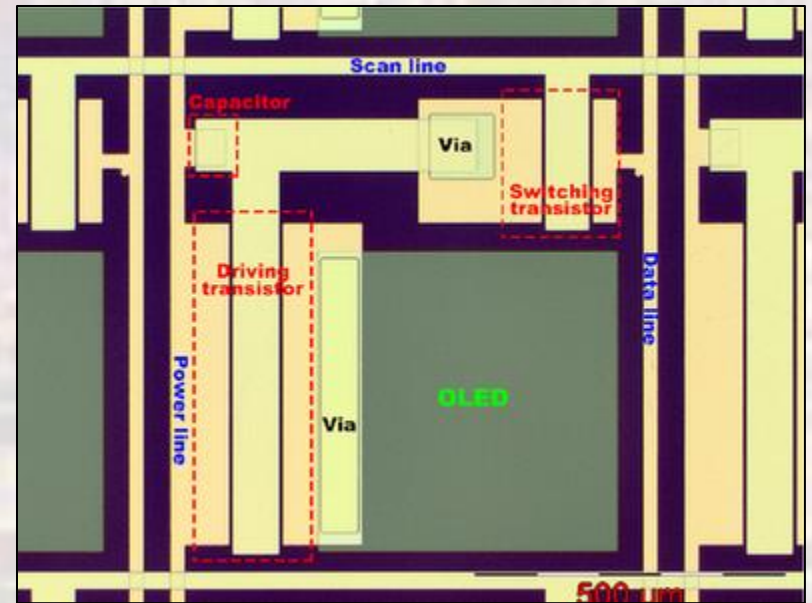
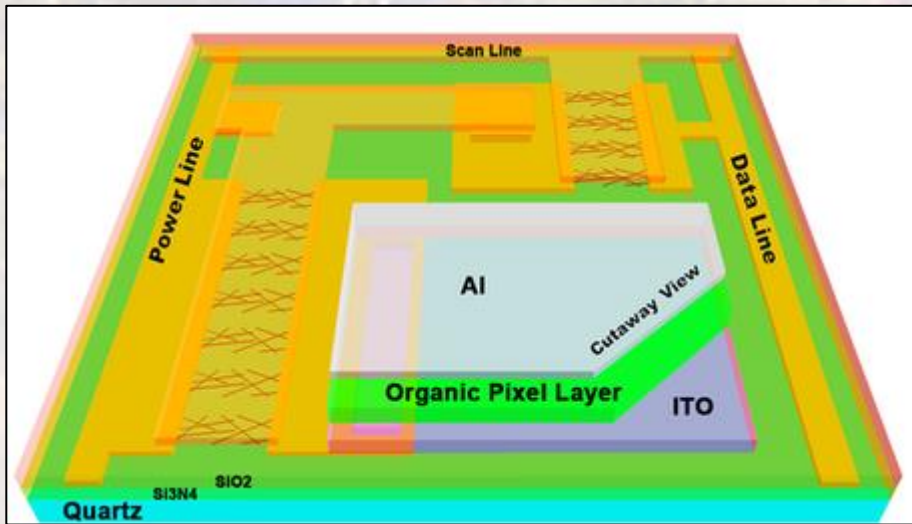
# OLED Displays

- Pixel Cell
  - Control the current flow in the LED
    - Voltage stored on a capacitor
    - Modulates current in the transistor (T2)
    - Intensity  $\approx$  current



# OLED Displays

- Physical structure



# OLED Displays

- Orientation
  - Top or bottom emission configurations

