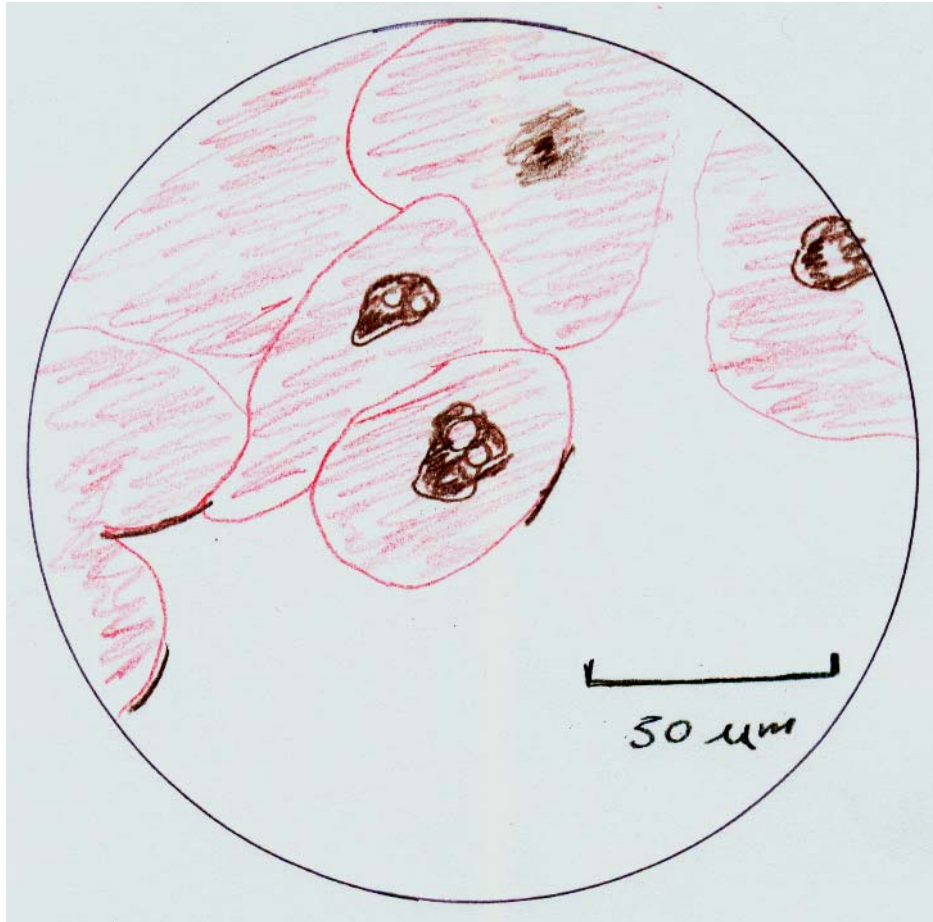


Making and Scanning Sketches  
BI-102, Fall '07, Dr. C. S. Tritt

Use a circle template to make an outline of the field of view. Sketch the view through the eyepiece. Start with large shapes and then fill in details. Be sure to add a scale bar based on viewing the calibration slide with the same objective and eyepiece combination.

Scan your drawings at 150 dpi. If you don't have a scanner, there is one available for student use in S-301.



**Figure 1: Sketch of frog blastula cells made using a 40x objective and the standard 10x eyepiece.**

Once your sketch has been scanned, you may need to use photo editing software (or the *Picture* tool bar in *Word*) to enhance its brightness and contrast, but if you do so be sure to describe how you enhanced the images in your procedures.